

MONTHLY MEMBERSHIP PROGRESS REPORT

LOCATION OHIO

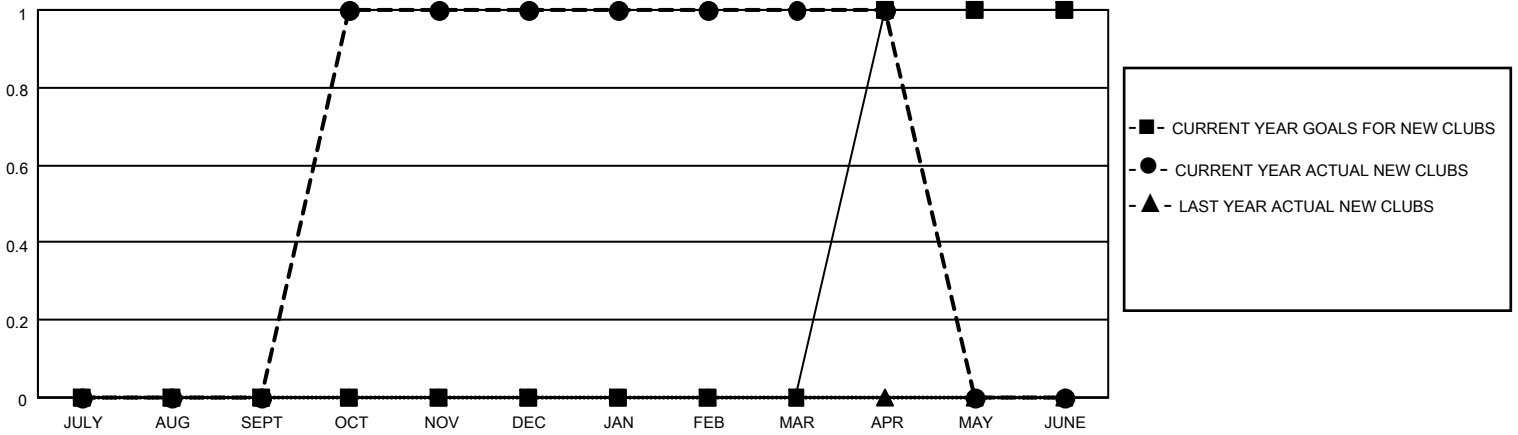
District 13 OH6

Results as of: 4/30/2021

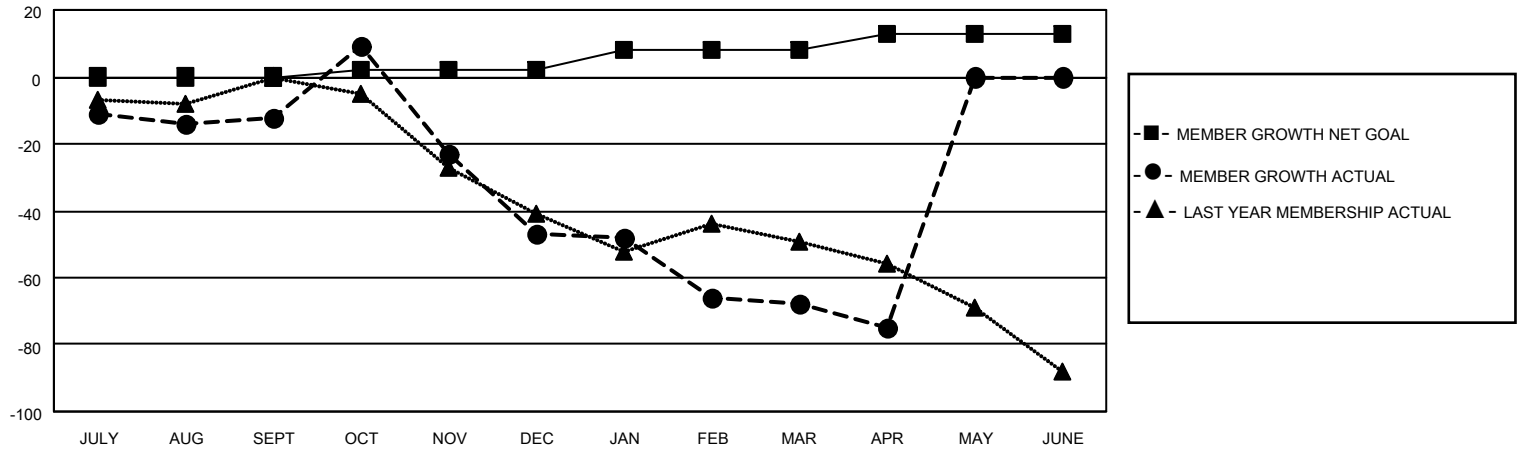
Clubs			
RESULTS FOR 2020-2021			
QUARTER	NEW CLUB GOAL	NEW CLUBS	DROPPED CLUBS
JULY/AUG/SEPT	0	0	0
OCT/NOV/DEC	0	1	3
JAN/FEB/MAR	0	0	0
APR/MAY/JUNE	1	0	0

Members			
RESULTS FOR 2020-2021			
QUARTER	MEMBER GROWTH NET GOAL	MEMBER GROWTH ACTUAL	DROPPED MEMBERS ACTUAL (including transfers)
JULY/AUG/SEPT	0	11	23
OCT/NOV/DEC	2	45	77
JAN/FEB/MAR	6	25	41
APR/MAY/JUNE	5	10	16

GOALS AND ACTUAL NEW CLUBS CUMULATIVE



GOALS AND ACTUAL MEMBERS CUMULATIVE



DROPPED CLUBS: 3	23 CLUBS OF 60 ADDED 1 OR MORE NEW MEMBERS	<u>GENDER DISTRIBUTION</u>
<u>DROPPED MEMBERS</u>		MALE 1,144 (70.70%)
DECEASED 30		FEMALE 474 (29.30%)
CLUB CANCELLED 29	CLICK HERE FOR CUMULATIVE MEMBERSHIP DATA	TOTAL FAMILY UNIT MEMBERS 385
OTHER 98		FAMILY MEMBERS PAYING HALF DUES 199
TOTAL 157		